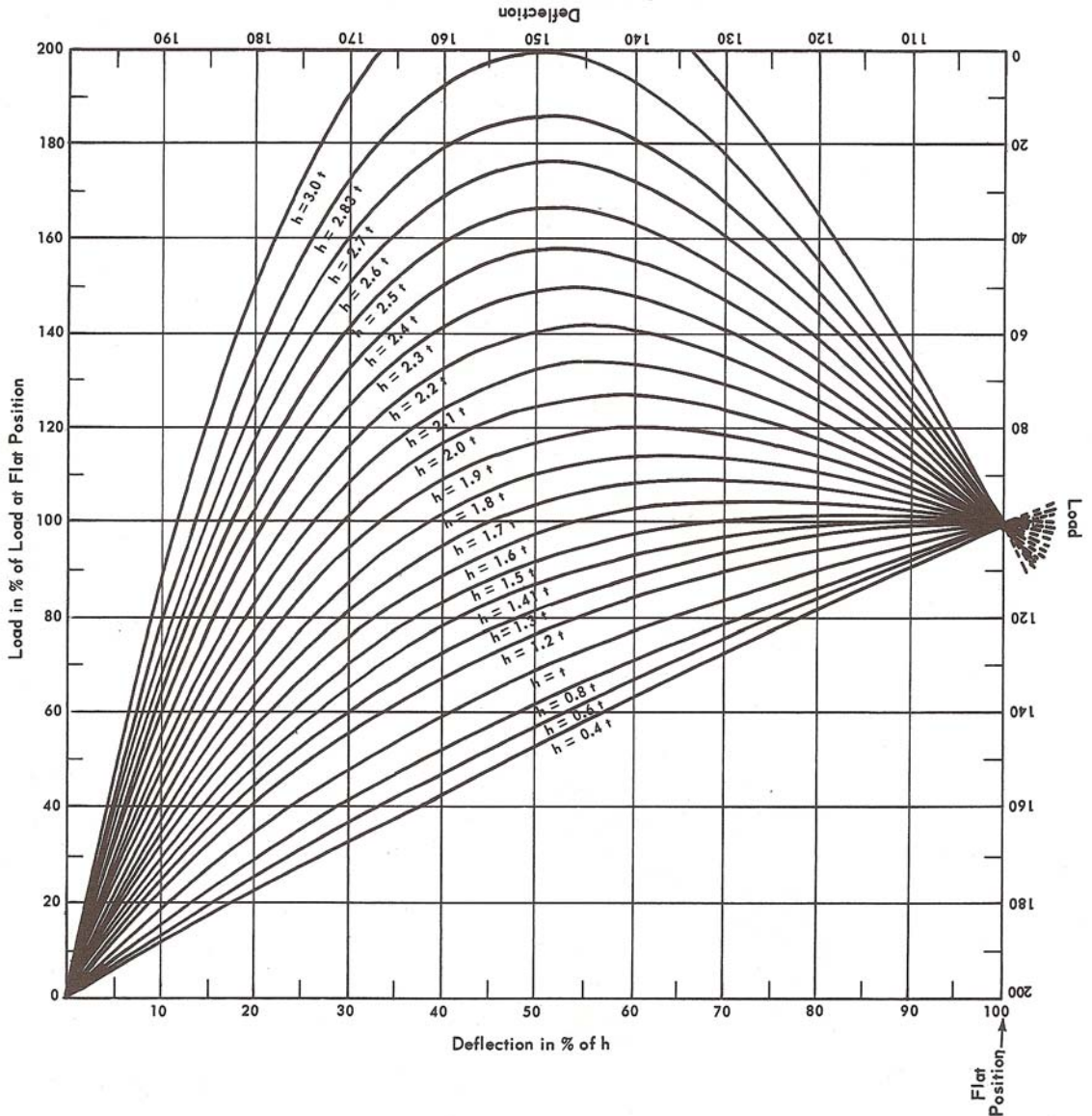


Load/deflection characteristics in belleville spring washers



If the washer is supported and loaded at its edges so that it is deflected beyond the flat position, then the greatest possible deflection can be utilized. Since the load/deflection curve beyond the horizontal position is symmetrical with the first part of the curve,

the chart has been labeled at the right and at the top to be read upside down for deflections beyond the horizontal. The dotted lines extending beyond the chart indicate the continuation of the curves beyond flat.